



2014 BRASIL

XXIII World Championship 2014 - B.G.F - Trolling - Vitoria/Brasil

November 22nd to 29th





HOW TO GET THERE

By airplane: Vitoria Airport (named after Eurico de Aguiar Salles) receives daily flights coming from international airports such as Rio de Janeiro and São Paulo. Participants can choose connecting flights from Rio de Janeiro (50 minutes) or São Paulo (1 hour and 20 minutes).

Key Distances:

From Airport to Yacht Club - 3,7km (app. 2 miles)
From Airport to Ilha do Boi Hotel - 5,1km (app. 3 miles)
From Vitoria do Rio de Janeiro - 550km (app. 340 miles)
From Vitoria to São Paulo - 1050km (app. 650 miles)

SHOPPING AND CONVENIENCE

There is a wide range of 24-hour services and convenience stores in town. Business hours are usually from 9 am to 6 pm, Monday through Friday. On Sundays, stores are closed, except restaurants and entertainment facilities.

WEATHER

Vitoria has a tropical climate, with an average temperature of 23°C (73°F), with heavy rain from October to January



(A) – Airport; (B) – Espírito Santo Yacht Club (late Clube)



(warm months). Temperatures may vary a lot in winter, reaching 30°C (86°F), but they decrease when winds blow from the ocean.

HEALTH SERVICES

Vitoria has a good health system, with high-quality clinics and hospitals.

PHONE CALLS

For international calls to Brazil, please dial +55, plus area code, plus phone number.

For example: (021) 2221-2110 ficará +55 21 2221-2110.

CONTACT INFO

For general information related to registrations, please contact the organizers of the event: late Clube do Espirito Santo (ICES). Address: Praça do late, nº 200 – CEP 29.055-730 - Praia do Canto – Vitória/ES – Brazil

www.ices.com.br

Telephone: +55 21 2221-2110 | +55 21 99999-9144

E-mail: biggamebrazil2014@gmail.com

HOTEL

Hotel Senac Ilha do Boi

Rua Bráulio Macedo, 417, Ilha do Boi, Vitória, ES.

www.hotelilhadoboi.com.br / Tel: +55 27 3345-0111





OTHER HOTEL OPTIONS

Bristol Praia do Canto

Av. Saturnino de Brito, 1.075, Praia do Canto, Vitória, ES.
www.alliahotels.com.br

Bristol Century Plaza

Av. Dante de Micheline, 435, Praia do Canto, Vitória, ES.
www.alliahotels.com.br

Four Towers Hotel

Av. Saturnino de Brito, 1.327, Praia do Canto, Vitória, ES
www.fourtowershotel.com.br

Ibis Vitória Praia do Canto

R. João da Cruz, 385, Praia do Canto, Vitória, ES.
www.ibis.com.br

CAR RENTAL SERVICES

Hertz

www.hertz.com.br

AVIS

www.avis.com.br

Localiza

Onde é fácil alugar um carro

www.localiza.com.br



Registration Period: 20/04 to 30/06/2014.

BANCO DO BRASIL
COD. SWIFT: BRASBRRJTVA
BANKER CORRESPONDENT
BRASDEFF - (EURO)
COD. IBAN: BR2500000000018020000502561C1
ACCOUNT NUMBER: 50.256-1



REGISTRATION FORM FOR COMPETITORS

Federation: _____

Country: _____

E-mail: _____ Tel.: _____

Surname & First Name

Competitors

- 1- _____
- 2- _____
- 3- _____
- 4- _____

Inscriptions by team (4 competitors) including accommodation: 5.000 EUROS

Inscription by team (4 competitors) without accommodation: 2.750 EUROS

Total: _____ EUROS



Registration Period: 20/04 to 30/06/2014.

BANCO DO BRASIL
COD. SWIFT: BRASBRRJTVA
BANKER CORRESPONDENT
BRASDEFF - (EURO)
COD. IBAN: BR2500000000018020000502561C1
ACCOUNT NUMBER: 50.256-1



REGISTRATION FORM (non competitors)

Federation: _____

Country: _____

E-mail: _____ Tel.: _____

Registration

Surname & First Name

Comments

Team Member 1 - Capitain: _____

Team Member 2 (non competitors): _____

Team Member 2 (non competitors): _____

Team Member 2 (non competitors): _____

Inscriptions by team (4 competitors) including accommodation: 600 EUROS x _____ = _____ EUROS

Inscription by team (4 competitors) without accommodation: 420 EUROS x _____ = _____ EUROS

Total: _____ EUROS



SCHEDULE

- **Sunday, November 23rd**

10 am to 4 pm - Welcoming the Teams

4:30 pm to 6 pm - Meeting for Captains and Boat Raffle – Hotel Senac Ilha do Boi

8:30 pm to 11 pm - Opening Ceremony and Welcome Dinner – late Clube Espirito Santo

- **Monday, November 24th**

6 am to 5 pm - Training Day – Free Time

TRAINING RATE: 1.500 EUROS

- **Tuesday, November 25th**

5 am - Breakfast (onboard)

5:30 am - Delivery of Farnangaio (Ballyhoo)

6 am - Departure of Boats

4 pm - End of stage (Lines out)

5:30 pm - Arrival of Boats and Welcoming

7 pm - Deadline for delivering summaries and footage

- **Wednesday, November 26th**

5 am - Breakfast (onboard)

5:30 am - Delivery of Farnangaio (Ballyhoo)

6 am - Departure of Boats

4 pm - End of stage (Lines out)

5:30 pm - Arrival of Boats and Welcoming

7 pm - Deadline for delivering summaries and footage

- **Thursday, November 27th**

5 am - Breakfast (onboard)

5:30 am - Delivery of Farnangaio (Ballyhoo)

6 am - Departure of Boats

4 pm - End of stage (Lines out)

5:30 pm - Arrival of Boats and Welcoming

7 pm - Deadline for delivering summaries and footage

- **Friday, November 28th**

Extra day – in case of bad weather (if not necessary, there will be no activities).

9 pm - Prize Ceremony / Gala Dinner

- **Saturday, November 29th**

Noon - Departure



ADDENDUM – RULES

1 TIMES

1.1 The time for departure is at 6 am and the end of stages is at 4 pm, and this will be announced to participant boats by the Control Station (Foxtrot 23), this being the official time (the one announced by the Station). In case a team has caught a fish in its line when the end of the stage is announced, this fish is disqualified and will not be considered for scores.

1.2 Vessels must wait for the authorization from the Control Station at 6 am, respecting the line between the beach of “Sacre Coeur” School and Frade Island (Ilha do Frade), without trespassing Rasa Island (Ilha Rasa).

FAILURE TO COMPLY WITH THIS RULE WILL RESULT IN DISQUALIFICATION.

The time for leaving the line in the water will be free.

2 LINES, BAIT, RODS AND HOOKS

2.1 Artificial or natural baits are allowed, dead or alive.

2.2 The maximum number of rods with lines in the water are 4 (four). Extra rods are not allowed in vessels.

2.3 Fishing must be done with fishing rods and reels.

2.4 The resistance of lines will be between 30 and 130 lbs.

2.5 The length of the leader is considered its total length, including any artificial bait or stop with hook. For all classes of line, the leader can have up to 30 feet (9,14 meters). The combination of double line plus leader and hook, must have up to 40 feet (12.19 meters), that is, from the knot of the double line (or swivel) up to the final part of the hook.

2.6 After each stage, all participant teams will be inspected and they must show all their fishing equipment, if asked to do so, for the inspection by the organizing committee or by someone delegated to do it. There will be no tolerance with teams out of the standards, which will be disqualified in that stage. Teams which refuse to show their equipment will also be disqualified in that stage.



3 SCORING

3.1 There will be no time limits for releasing any type of fish, provided that the times for starting and ending each stage are respected.

3.2 After the fish is stricken, only the fisherman can touch the rod, that is, he/she is not allowed to get any help from other people from his/her team, during the struggle. Extra help is only allowed for holding the leader – it is not allowed to touch the double line.

4 CONTROL

4.1 The teams/Skipper must, mandatorily, immediately communicate only the strike (fish in the line) of billfish to the Control Station (Foxtrot 23), frequency SSB 4431.8, SSB 8291.1 or VHF 68. Right after, the release or embark must be reported, as well as the position (latitude and longitude), including the name of the team and the name of the fisherman. When there is loss of a previously reported fish, one must report only the loss of the fish to the Control Station.

4.2 In case the vessel is out of range and cannot communicate with the Control Station (Foxtrot 23), a “bridge” should be established with other vessel to report about the fish. The use of satellite phones is allowed only when a “bridge” communication with the Control Station is not possible. Fish are considered valid only when they are registered in the summary of Control.

4.3 In the final 15 (fifteen) minutes of each stage, that is, from 3:45 pm on, announced by the Control Station, radio frequencies should be free, so that everyone can listen to the “END OF STAGE” warning, except when reporting fish is necessary.

5 PROTEST

5.1 Any protest between vessels must be written, using an appropriate form, available at the Secretariat of the Club, signed by the commander of the vessel, to be delivered until 7 pm on the day of the stage, to the Secretariat of Fishing, except for teams which are in the condition described in item 3.3.

5.2 Yacht Club seeks the preservation of marine fauna



and encourages the release of living billfish.

5.3 This present regulation is being revised.

6 HOOKS

It is allowed only the use of hooks such as Circle Hook, Non-Offset (circular hook, straight) in natural baits, dead or alive. J-Hooks are only allowed for artificial baits. The use of stainless steel hooks is forbidden, at any circumstance.

7 SCORING

7.1 All fish will be released.

7.2 All released fish must be registered using a digital camcorder, to be considered released and valid for scoring. In the footage, the following items must be present:

- The final moments of fishing (from the moment in which the double line and/or leader touches or enters the rod, up to its release).
- Identification of species.
- A member of the team or sailor touching the leader

(not the double line), with the fish still stricken.

- Non-stop footage (without pauses).
- The release must be shown by the fisherman during the footage (after the release), including the final part of the stop (the cut and/or broken line or the hook) to prove the release of the fish.
- At any moment during the footage, the identification bracelet for that day must be shown.

It will be considered valid only the fish whose footage contains all the items described above. In case of footage with doubts concerning the requirements of these rules...

Notes:

- The fish cannot be embarked for its release. Release must occur when the fish is on the side or on the stern of the vessel, still in water – it is only allowed to hold the bill of the fish to facilitate its release and oxygenation. Fish which is embarked or taken from water will be disqualified, even if it is released later.
- Photos will not be considered for the validation of fish.
- Changes of fishermen are not allowed from the moment fish is stricken up to its release.
- Teams must provide a transfer cable (USB) along with



the camcorder for the Arbitration Committee at the moment of disembark, or a similar device compatible with the equipment of the organization for footage transfer.

7.3 Teams will get the following points for each valid released fish

Blue Marlin - 600 points

White Marlin - 200 points

Sail Fish - 200 points

Wahoo (*Acanthocybium Solandri*) - 50 points

Tuna (*Thunnus Sp.*) - 50 points

Dolphinfish (*Coryphaena hippurus*) - 30 points

Mackerels (*Scomberomorus Sp.*) - 20 points

Skipjack Tuna (*Scombridae*) - 20 points

7.4 The tiebreaker will be the time of release/embark of the first fish, as described in the summary.

7.5 After the end of each stage there will be a call from the Control Station (Foxtrot 23) for every vessel, to confirm the total amount of released and embarked fish. After this confirmation, the Station will announce this information to all participant vessels.



LIST OF VALID FISH



Sailfish (*Istiophorus albicans*)



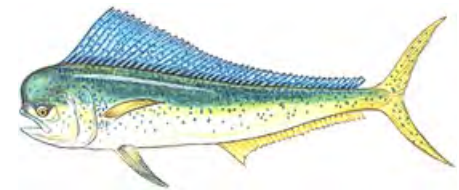
White Marlin (*Tetrapturus albidus*)



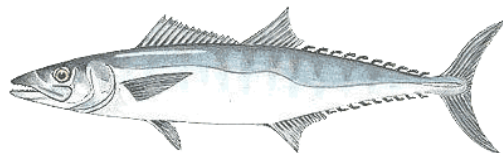
Bonito Oceânico (*Scombrídeos*)



Blue Marlin (*Makaira nigricans*)



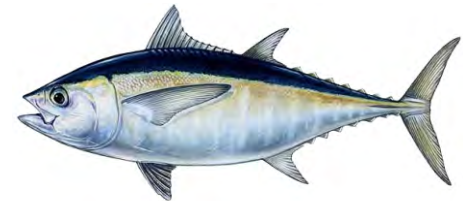
Dourado/Mahi-mahi (*Coryphaena hippurus*)



Sarda (*Scomberomorus Sp*)



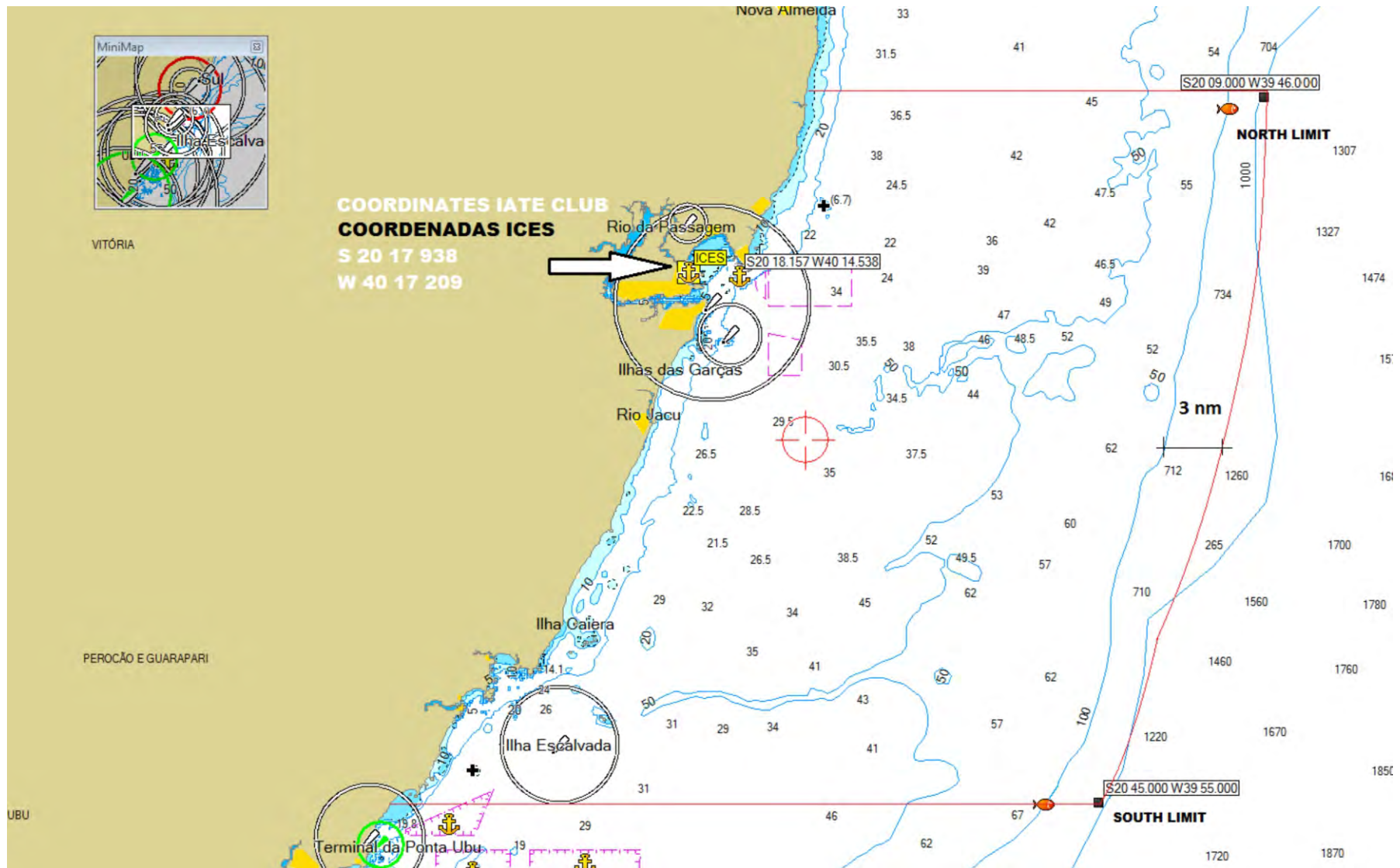
Wahoo (*Acanthocybium Solandri*)



Tuna (*Thunnus Sp*)



FISHING ZONE





BOATS

