



33^{ème}

Championnat du Monde

BIG GAME

de pêche broumé ancré

23 > 30 Août 2025

PORT SAINT LOUIS DU RHÔNE





EDITO

Martial Alvarez

Mayor of Port Saint Louis du Rhône
Bouches-du-Rhône Department Councillor
Vice-President of Métropole Aix-Marseille Provence



It is with great pride and joy that our town has the honor of hosting this year's Big Game World Championship.

This international event is much more than just a competition; it's a celebration of the universal values of effort, self-improvement and respect.

We've pulled out all the stops to make this event a success, thanks to the mobilization of our municipal teams and local partners.

If this event sees the light of day today it is above all thanks to the unfailing commitment of a volunteer team from the Thon Club de la Grand'Bouche. Their know-how and energy have been at the heart of the organization of this world championship.

You are the true ambassadors of our town!

By bringing together competitors from the four corners of the globe, we're sharing a unique moment that will make our region shine beyond our borders. It's an extraordinary opportunity to show just how welcoming, dynamic and forward-looking our community is.

Beyond the competition, this championship is also a wonderful opportunity to share and meet. It's a moment when sport transcends differences and brings generations together, when the exploits of these champions inspire each and every one of us, and when we remember that, together, anything is possible.

My sincerest thanks for your commitment and enthusiasm, and I wish you all a memorable championship and unforgettable moments in our community.

EDITO

Serge Marchese

President of the association Thon Club de la Grand'Bouche



The Thon Club de la Grand'Bouche has been selected to organize the 33rd **BIG GAME Anchored Scrambling World Championship**, which will take place from **August 23rd to 30th, 2025 in Port Saint Louis du Rhône**.

In 2013, our club was the first to organize a Big Game fishing world championship in France. It was remarkably well organized and appreciated by all the competitors, with whom we have many fond memories.

This 2025 edition will take place on the same fishing grounds as in 2013, as the Rhone delta makes for a very fishy site.

We hope to see you soon in our region so that you can enjoy our sunny town, our port, our Camargue landscapes, our customs and our desire to share our passion, “big-game fishing”.

Our friend Gérard CAVOLINO, whom we keep in our thoughts, created the Thon Club de la Grand'Bouche in 2004 to organize national and international competitions, and since 2016 I've been president of the association.

We've organized numerous championships and inter-club competitions with Italy, Spain and Croatia, and we've also been planning our annual local competition for the past 28 years.

For all clubs and individuals interested in the event, we'll do our best to meet your expectations and do everything we can to ensure a warm and dynamic WORLD CHAMPIONSHIP in PORT SAINT LOUIS du RHÔNE!

EDITO

Jean-Luc QUERNEC

President of the French Federation of Sport Fishing



It's a great opportunity for the French Sport Fishing Federation to highlight the excellence and dynamism of sport fishing in France with this world-renowned event.

The choice of Port Saint Louis du Rhône as the venue for the 33rd Big Game Fishing World Championship is an obvious one.

Nestled in picturesque landscapes, **this region boasts exceptional biodiversity and fish-rich waters, making it an ideal setting for teams from all over the world.**

The Thon Club de la Grand'Bouche, a pillar of the local community, will do everything in its power to make this competition an unforgettable experience.

Thanks to its expertise and passion, the club will guarantee a unique experience for competitors and spectators alike.

Spectators and participants will also be able to enjoy the festive atmosphere and local traditions that will make this an unforgettable event.

Solidarity, team spirit and love of the sea will be the values held high by all participants.

Together, let's make this championship a grandiose celebration of sport fishing under the banner of fair play and sport.

EDITO

Audrey NUTTENS

Head of Sea Delegation, FFPS Vice-President



The sea delegation of the French Federation of Sport Fishing is delighted to have been chosen to host the 33rd Anchored Boat Big-Game World Championship.

The organization, entrusted to the dynamic team of the Thon Club de la Grand'Bouche, supported by Amine MAMMERY, national manager of the big-game discipline, and backed by the town of Port Saint Louis du Rhône and the Bouches du Rhône department, will, I'm sure, be up to the challenge.

As summer draws to a close, you'll be able to discover the charms of the French Riviera, with its ever-present sunshine, clear, calm blue Mediterranean Sea and pleasant temperatures. And don't forget the many impressive fish...

But beware of the mosquitoes, which are very numerous on this coast!

During your relaxing moments, you can enjoy the region's culinary specialties, such as tapenade, bouillabaisse or pissaladière... the good red wines of the Côtes du Rhône, to be consumed in moderation, or the calissons of Provence, as well as the cultural sites of the PACA region, such as the old port or the "Bonne Mère", the basilica of Notre Dame de la Garde in Marseille.

We look forward to welcoming you to the French Riviera, one of the most beautiful in France, and wish you every success in preparing for this championship. Good luck to you all, and may the best win!



WELCOME TO PORT SAINT LOUIS DU RHÔNE

BORN FROM THE MEETING OF FRESH AND SALT WATER...



© Crédits photos Ville de Port Saint Louis du Rhône

A unique setting

As the gateway to the wild Camargue, Port Saint Louis du Rhône stands out for its openness to the Mediterranean Sea. It offers a landscape with remarkable ecological and heritage features.

It has preserved its fragile, original environment by joining the Camargue Regional Nature Park in February 2011. Bulls, horses, pink flamingos... make up this magnificent landscape of swamps and farmland, born of the encounter between fresh and salt water.

portsaintlouis.fr



Location

Port Saint Louis du Rhône is a French commune in the Bouches du Rhône department in the Provence-Alpes-Côte d'Azur region.



Nearby airports

Marseille Provence airport: 65.4km - 52 min

EN KEY FIGURES

8446
INHABITANTS
Source INSEE 2021
 The town turned 120 in 2024.

1737
A HISTORICAL MONUMENT, THE TOUR SAINT LOUIS
 was erected in 1737

2011
 In 2011 the Commune joined the perimeter of the
REGIONAL NATURE PARK DE CAMARGUE.

10
 With its 10 km of fine sand, Napoleon beach is one of the largest beaches in Camargue.
 In May 2024, it hosted the Olympic Torch Relay.

4000
THE DEPARTMENT'S LEADING FISHING PORT
 6 PORTS open to the sea and the Rhône, and more than 4,000 dry and afloat berths.

1st
 Port Saint Louis du Rhône ranks first among the department's producers.

2nd
COMMERCIAL PORT OF THE REGION
 behind Marseille, and ahead of Port-de-Bouc and La Ciotat.

160
 With 160 HECTARES OF LAND for 617,000 m² of capacity, DISTRIPORT is the largest port logistics zone in Southern Europe.



BIENVENUE À PORT SAINT LOUIS DU RHÔNE

NÉE DE LA RENCONTRE ENTRE L'EAU DOUCE ET L'EAU SALÉE...

At the heart of the sea's riches

A seafaring tradition deeply rooted in Saint Louisian culture. The Anse de Carteau is an exceptional site for oyster and shellfish farming, accounting for almost 10% of national production.

Located between the Rhône and the Mediterranean, next to the Grand Port Maritime de Marseille Fos, between Corsica and the Balearic Islands, Port Saint Louis du Rhône has a strategic maritime and river position at the heart of its history. The sea is part of its daily life, and much of the town's economic activity is focused on the sea and the nautical and maritime industries.

The harbors

With six public and private marinas, and the ongoing development of the Mazet zone in partnership with the Pôle Nautisme, Mer & Développement and the Aix-Marseille-Provence metropolitan area, the city is one of the Mediterranean's leading marinas.

The beach

Just south of the town of Port Saint Louis du Rhône, this 10 km-long beach is home to sports enthusiasts (kite-surfers, sand yachts, horseback riders) and lovers of wide open spaces. The beach has been landscaped to protect the natural environment. Napoleon beach is one of the great sandy beaches of the Mediterranean coast.

In May 2024, it hosted the Olympic Torch Relay.



© Crédits photos Ville de Port Saint Louis du Rhône



33^{ème}
**Championnat
du Monde**
BIG GAME
de pêche broumé ancré



© Crédits photos Ville de Port Saint Louis du Rhône



portsaintlouis.fr

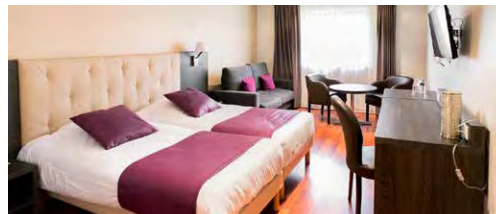


ACCOMMODATION HOTEL DELEGATIONS



ARIANE HOTEL***

This cozy, family-run hotel features a swimming pool, wooded grounds, seminar room, “L'étang des saveurs” restaurant and individual garages.



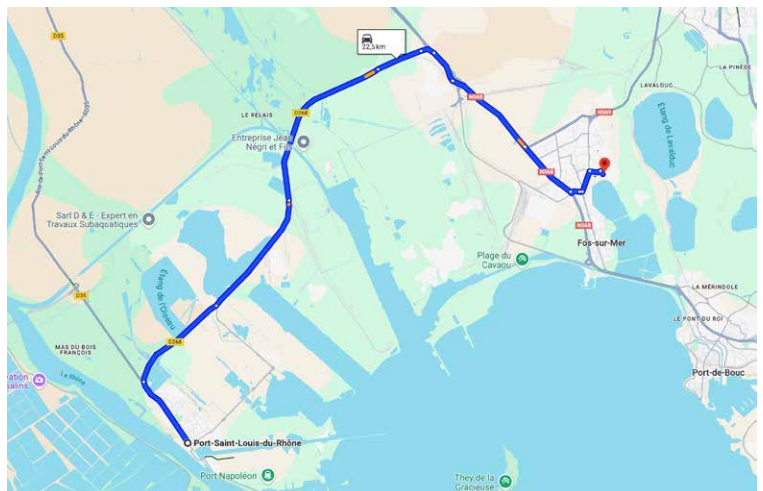
HOW TO REACH THE ARIANE HOTEL IN FOS-SUR-MER

Chemin du Plan d'Arenc, 13270 Fos-sur-Mer - 04 42 05 00 57

By Car : 22 min/22,5 km - via D268

Find out more:
<https://groupe-ariane-hotel.com/ariane-fos-sur-mer-hotel-3-etoiles/>

Click to see
the itinerary



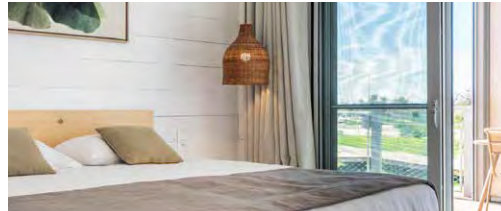


ACCOMMODATION HOTEL DELEGATIONS



CAMARGUE LODGES Natura Resort

Eco-responsible stilt lodges with a natural swimming pond, inspired by fishermen's huts.



HOW TO REACH LES LODGES DE CAMARGUE IN PORT SAINT LOUIS DU RHÔNE

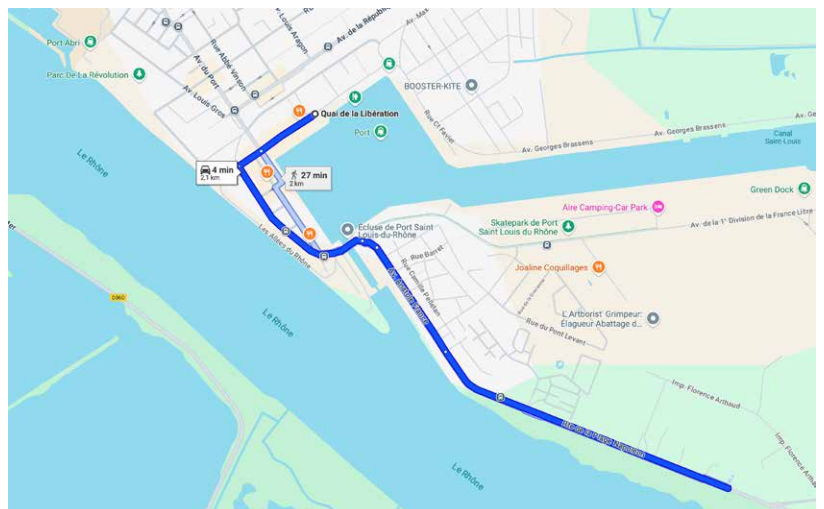
Route de la plage Napoléon - Lieu-dit le Mazet - 06 67 32 08 02

BY CAR: 4 min/2,1 km

BY FOOT : 25 min/2,1 km

Find out more:
<https://www.lodgesdecamargue.com>

Click to see
the itinerary





PROGRAM

AUGUST 23 > 30, 2025

33RD BIG GAME WORLD CHAMPIONSHIP ANCHORED SCRAMBLE FISHING

SATURDAY, AUGUST 23, 2025

ALL DAY - ARRIVAL OF DELEGATIONS: WELCOME AND HANDING OF WELCOME BAGS

SUNDAY, AUGUST 24, 2025

- 10h00 ● Welcoming fishermen to the marina
- 10h00 ● Captain's meeting
- 13h00 ● Lunch
- 17h30-18h30 ● Parade departing from the marina
- 20h00 ● Meal at the Marcel Pagnol hall

MONDAY, AUGUST 25, 2025: OFFICIAL TRAINING DAY

- 5h30-6h00 ● Breakfast in the harbour Bait draw -distribution of packed lunches
- 6h20 ● Boats depart and head for the lock
- 7h00 ● Meeting point for "RHÔNE buoy" group departure
- 8h00 ● Launching of lines for training day
- 14h30 ● Lifting of lines - training day ends
- 17h30 ● Arrival at the Port
- 19h00 ● Dinner at the Port

TUESDAY AUGUST 26 TO THURSDAY AUGUST 28 2025: CHAMPIONSHIP DAYS

- 5h30-6h00 ● Breakfast in the harbour Bait draw - distribution of packed lunches
- 6h20 ● Boats depart and head for the lock
- 7h00 ● Meeting point for group start at the "RHÔNE buoy"
- 8h00 ● Launching of lines for the day of the Championship
- 14h30 ● Lifting of lines
- 17h30 ● Arrival at the Port
- 19h00 ● Dinner at the Port

FRIDAY AUGUST 29TH, 2025: extra day in case of bad weather

- 17h30 ● Speech at the Marcel Pagnol Hall
- 18h00 ● Prize-giving ceremony
- 20h00 ● Closing evening in the Marcel Pagnol hall

Lunch for accompanying persons with all-inclusive plan at the port of Port Saint Louis du Rhône (Lunch basket)



RULES

33RD WORLD CHAMPIONSHIP

AUGUST 23 > 30, 2025 - PORT SAINT LOUIS DU RHÔNE



Please refer to the **BIG GAME FIPS MER** :
www.fips-m.org

BAITS :

40 KG OF SARDINES /PER DAY /PER BOAT
UNUSED BAIT WILL BE THROWN BACK INTO THE SEA

**WORLD CHAMPIONSHIP AT SCRAMBLE ANCHORAGE
MANDATORY**

EQUIPMENT :

4 RODS ALLOWED / PER TEAM

ELECTRIC MOTORS TYPE :

- MINNKOTA or equivalent **PROHIBITED**
- ELECTRONIC PANOPTIX or equivalent **PROHIBITED**

LINE CLASS: 80 LBS MAXIMUM STAND-UP COMPETITION





POINTS SCALE 33RD WORLD CHAMPIONSHIP

AUGUST 23 > 30, 2025 - PORT SAINT LOUIS DU RHÔNE

Authorized fish for the Championship :



RED TUNA
 Bluefin Tuna

SWORDFISH
 Swordfish



FISHING METHOD

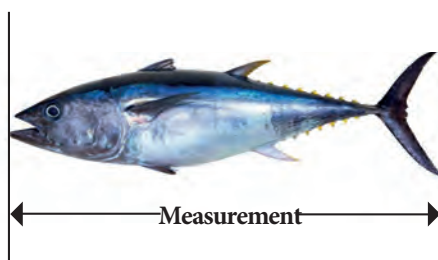
Fishing must be done from an anchored boat.

Wire breaking strength 80 lb maximum. Hooks must be circular and made of corrosive material (no stainless steel).

Points system for validated fish :

FISH	Bluefin tuna larger or equal to 160cm
RED TUNA Red Tuna - 160 cm : bonus fish	150 Points
SWORDFISH	50 Points - NO SIZE

Fish measuring rod :

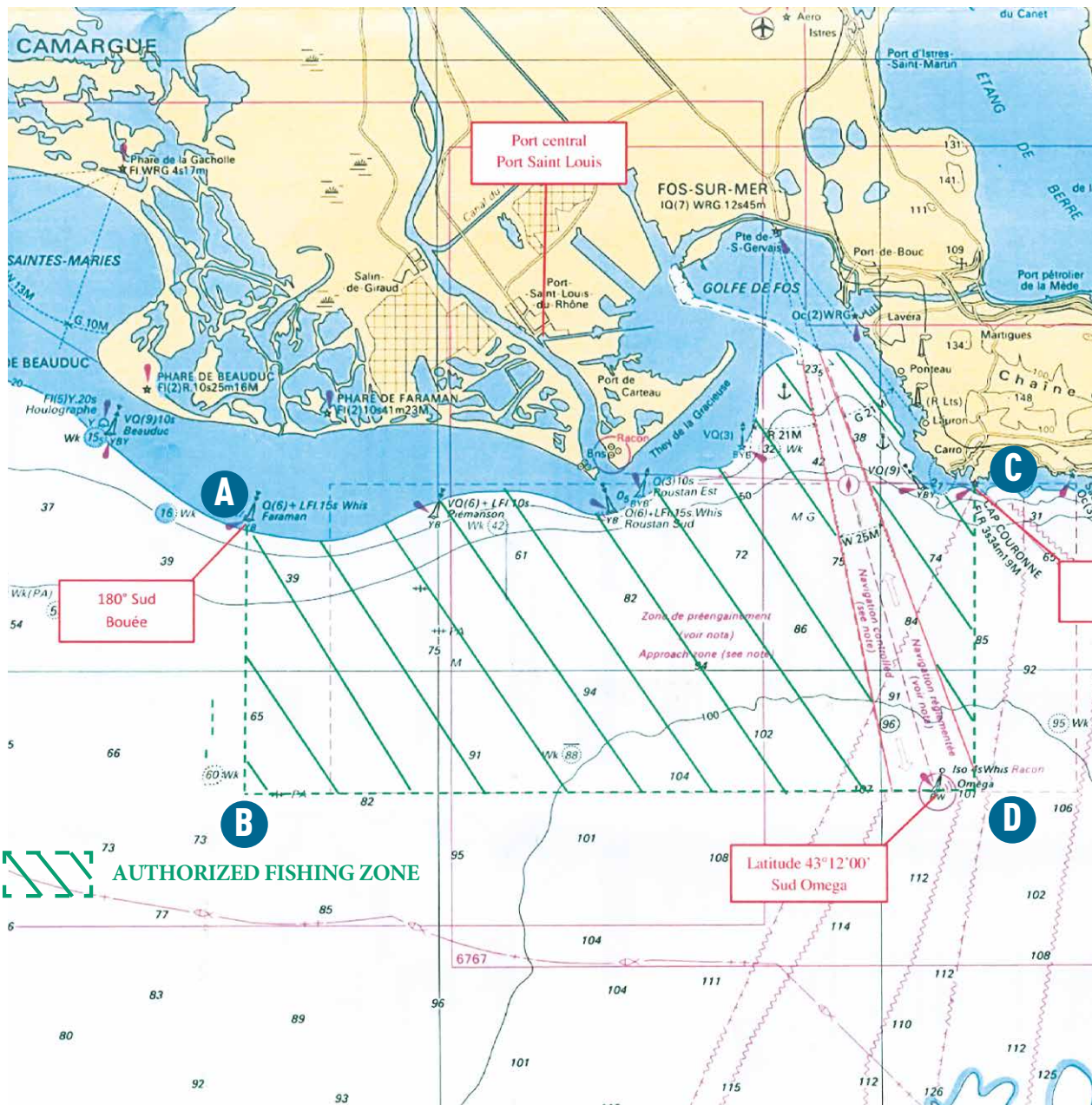




FISHING AREA

33RD WORLD CHAMPIONSHIP

AUGUST 23 > 30, 2025 - PORT SAINT LOUIS DU RHÔNE



A (LAT= 43°19'N-LONG=4°39'E)

B (LAT= 43°12'N-LONG=4°39'E)

C (LAT= 43°19,5'N-LONG=5°3,5'E)

D (LAT= 43°12'N-LONG=5°3,5'E)



BOAT MODELS

33RD WORLD CHAMPIONSHIP

August 23 < 30 2025



SEASHERON



JUJU



SAINT LOUIS



SOUNOZA



THE BIG BOSS



BIG BOSS II



TUNABAR



CISSOU

Boat rental :

for each unofficial training day prior to the World Championship

Boat length 8 meters - 12 meters - Speed 20/30 Knt 950,00€

Esches/Amorce on non-official training days :

40 kg of sardines per boat per day **140€**

UNUSED BAIT WILL BE DISPOSED OF AT SEA



FISHING SHOPS



FLUID ELEC

PORT SAINT LOUIS DU RHÔNE

Marine equipment and accessories

Avenue de la 1^{er} DFL, Quai de la Suisse, 13230 Port Saint Louis du Rhône

04 42 48 46 23



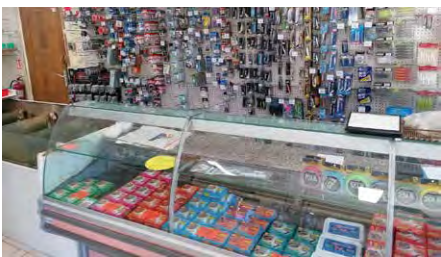
LE CRABE BLEU

PORT SAINT LOUIS DU RHÔNE

Fishing tackle

5 Quai Reybert, 13230 Port Saint Louis du Rhône

04 90 42 85 31



POUTIK & CO

PORT SAINT LOUIS DU RHÔNE

Bait and tackle for sale

61 Avenue du Port, 13230 Port Saint Louis du Rhône

04 42 86 09 66



PLANÈTE FISHING

MARIGNANE

Fishing store

Centre commercial intermarché, Avenue du 8 mai 1945, 13700 Marignane

04 42 15 05 59



REGISTRATIONS

COST OF PACKAGES

33RD BIG GAME WORLD CHAMPIONSHIP ANCHORED SCRAMBLE FISHING

1) FULL-BOARD TEAM PACKAGE FOR 4 ATHLETES* (overnight stay, breakfast, lunch, dinner, gala dinner + “packed lunch for competition days” and accommodation in double room)	6600 €
2) FULL-BOARD PACKAGE PER SINGLE ATHLETE* (overnight stay, breakfast, lunch, dinner, gala dinner + “packed lunch for competition days” and accommodation in double room)	1650 €
3) TEAM PACKAGE FOR 4 ATHLETES* without accommodation: gala dinner and packed lunch included	4840 €
4) PACKAGE PER SINGLE ATHLETE* without accommodation: gala dinner and packed lunch included	1210 €
5) FULL-BOARD PACKAGE FOR ACCOMPANYING PERSONS, RESERVES AND CAPTAINS (overnight stay, breakfast, lunch, dinner, gala dinner + “packed lunch for competition days” and accommodation in double room)	950 €
6) HALF-BOARD PACKAGE FOR ACCOMPANYING PERSONS (overnight stay, breakfast, dinner, accommodation in double room, gala dinner not included (€50))	870 €
Extra meal costs	35 €
Daily cost of lunch packs	25 €
Cost of gala dinner	50 €

*** Fees listed under points 1, 2, 3 and 4 include boat and bait hire for competition days and official training.**

Dinner will consist of a first course, second course, side dish, dessert and coffee; drinks, water and ¼ wine included. Breakfast will be served on the Port.
Extra drinks are not included in the package.



FOR BOOKINGS

DURING THE UNOFFICIAL PERIOD

Organization : **THON CLUB DE LA GRAND'BOUCHE**

1 Port Abri du Rhône - Rue Jules Guesde
13230 Port Saint Louis du Rhône

Organization coordinator: **Serge Marchese 06 13 44 07 49**
Arnaud 06 16 18 01 12
cdmtcgb@gmail.com

REGISTRATION AND PAYMENT

Registration forms and full payment must be received by April 20, 2025 at :
Association Thon Club de la Grand'Bouche



Titulaire du compte / Account holder
ASS THON CLUB DE LA GRAND'BOUCHE
ASS THON CLUB DE LA GRAND'BOUC 1 PORT ABRI
DU RHONE
RUE JULES GUESDE
13230 PORT-SAINT-LOUIS-DU-RHONE

IBAN

FR76 1131 5000 0108 0043 9291 430

BIC

CEPAFRPP131

Relevé d'Identité Bancaire / Bank details statement

Ce relevé est destiné à être remis, sur leur demande, à vos créanciers ou débiteurs appelés à faire inscrire des opérations à votre compte (virements, paiements de quittances, etc.).

Son utilisation vous garantit le bon enregistrement des opérations en cause et vous évite ainsi des réclamations pour erreurs ou retards d'imputation. / This statement is intended for your payees and/or payors when setting up Direct debit, Standing orders, Transfers and Payment. Please use this Bank account statement when booking transactions. It will help avoiding execution errors which might result in unnecessary delays.

Code Banque	Code guichet	N° du compte	Clé RIB	Domiciliation / Paying Bank
11315	00001	08004392914	30	13 AV DE LA REPUBLIQUE 13230 PORT ST LOUIS DU RHONE



33^{ème}
**Championnat
du Monde**
BIG GAME
de pêche broumé ancré



THON CLUB DE LA GRAND'BOUCHE

1 Port Abri du Rhône - Rue Jules Guesde - 13230 Port Saint Louis du Rhône

Serge Marchese 06 13 44 07 49 / Arnaud 06 16 18 01 12

cdmtcgb@gmail.com

f Thon Club Tcgb



ESSENTIAL ANTI-DOPING ADVICE

GENERAL INFORMATION

The athletes participating in the Championship, with the registration, implicitly accept all WADA anti-doping rules. Athlete whose illness or condition requires treatment with a prohibited substance or method must apply to CIPS for a Therapeutic Use Exemption (TUE) following the CIPS strict TUE application process.

He/she shall then use the application form, which can be downloaded from the ITA website: <https://ita.sport/resource/international-testing-agency-therapeutic-use-exemption-tue-application-form/>

The TUE request has to be sent to the following address: tue@ita.sport

Athletes must therefore consult the Prohibited List <https://www.wada-ama.org/en/prohibited-list> If the TUE is granted, the athlete will then be permitted to use the medication during the period of validity of the TUE without committing an Anti-Doping Rules Violation (ADRV).

Regardless of whether a TUE has been granted or not, athletes should always declare on the doping control forms filled out during sample collection any medications and supplements taken within the seven days prior to sample collection, and any blood transfusions in the three months prior for blood samples.

If a TUE has already been granted by a NADO or by a RADO, the Athlete in question does not have to apply for any additional CIPS TUE, as CIPS recognizes all TUE granted by NADOs and RADOs.

Every athlete has the right to play a clean sport.

WORLD ANTI-DOPING AGENCY www.wada-ama.org/en